

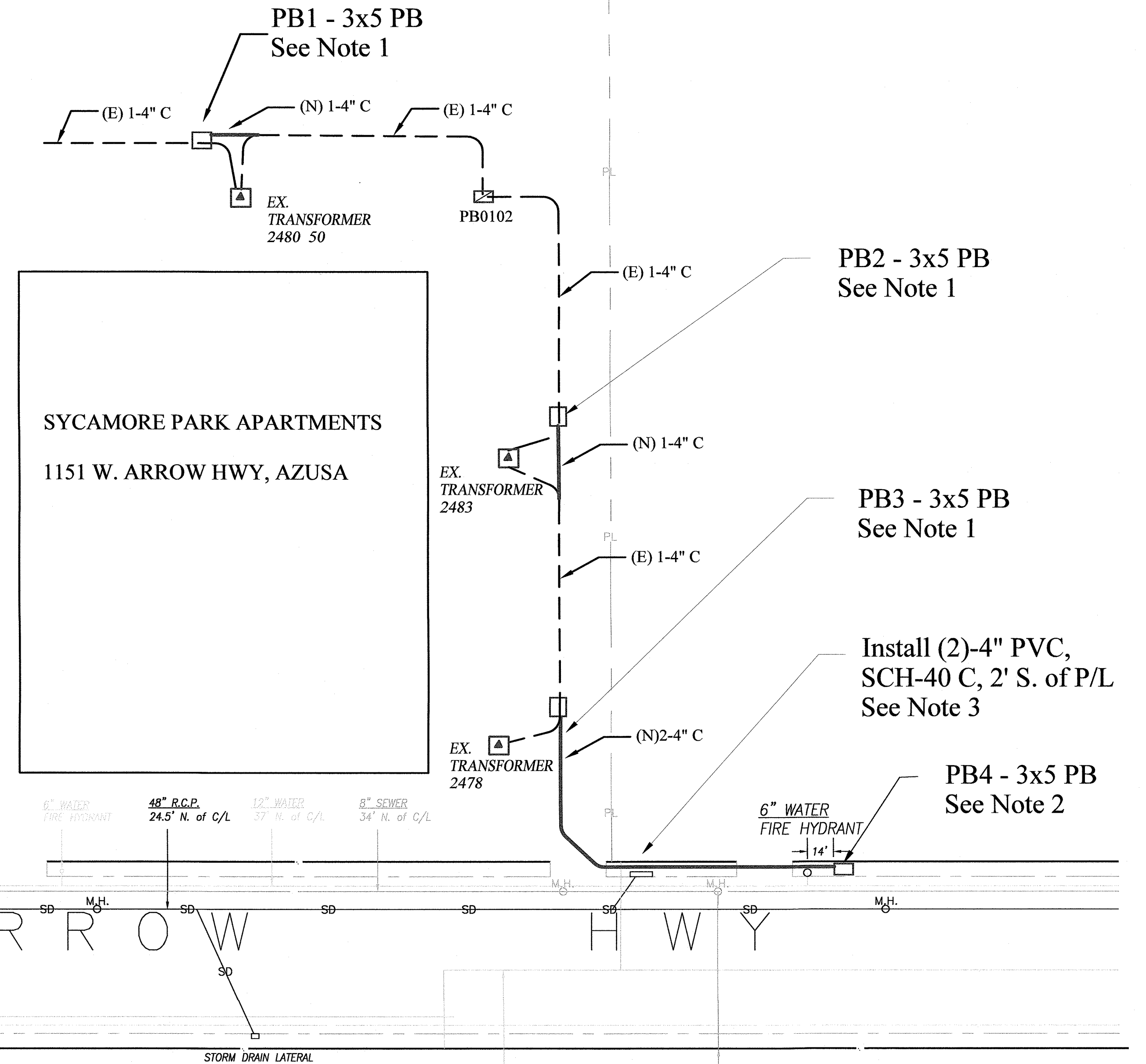
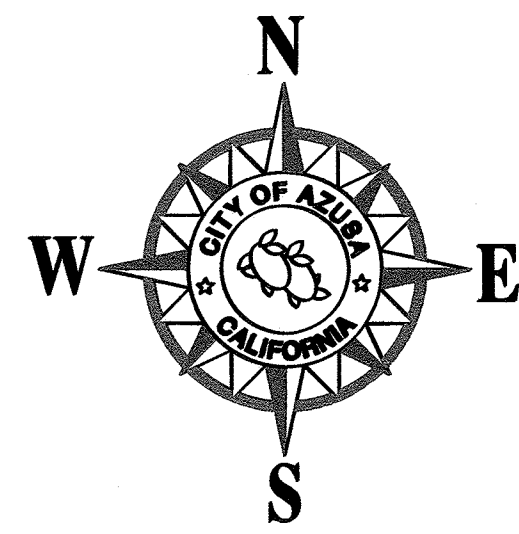
VICINITY MAP



CONSTRUCTION NOTES:

THIS PLAN DEPICTS THE EXISTING AND PROPOSED ELECTRIC FACILITIES AS A SCHEMATIC DIAGRAM ONLY. CONTRACTOR IS REQUIRED TO FIELD VERIFY ALL LOCATIONS AND DIMENSIONS OF EXISTING AND PROPOSED FACILITIES WITH AZUSA LIGHT AND WATER.

1. AT THIS LOCATION, CAREFULLY POTHOLE AND EXPOSE EXISTING CONDUITS WITHOUT USING EXCAVATING EQUIPMENT. FURNISH AND INSTALL 3' X 5' PULLBOX PER MANUFACTURER SPECIFICATIONS. INTERCEPT/CONNECT EXISTING CONDUITS INTO PULLBOX AS SHOWN. INSTALL 2 GROUND RODS & GROUND WIRES. EXISTING CONDUITS CONTAIN ENERGIZED HIGH VOLTAGE CABLES. COORDINATE ALL WORK WITH ALW SAFETY MAN. FIELD VERIFY EXACT LOCATION OF PULLBOX WITH PROJECT MANAGER. REFER TO ELECTRIC STANDARDS ED1, ED4 AND ED14 (FOR TRAFFIC RATED LID) FOR DETAILS AND SPECIFICATIONS. RESTORE THE WORK AREA TO ITS ORIGINAL CONDITION INCLUDING LANDSCAPE & HARDSCAPE, SUCH AS SHRUBS, CURB & GUTTER, PAVEMENT.
2. AT THIS LOCATION, FURNISH AND INSTALL 3' X 5' PULLBOX PER MANUFACTURER SPECIFICATIONS. CONNECT 2-4" CONDUITS INTO PULLBOX. INSTALL 2 GROUND RODS & GROUND WIRES. FIELD VERIFY EXACT LOCATION WITH PROJECT MANAGER. REFER TO ELECTRIC STANDARDS ED1, ED4, AND ED14 (FOR PARKWAY RATED LID) FOR DETAILS AND SPECIFICATIONS. RESTORE SIDEWALK PER AZUSA PUBLIC WORKS' REQUIREMENTS. BE CAUTIOUS WHEN EXCAVATING NEAR POWER POLES AND FIRE HYDRANT. IF THRUST BLOCK OF FIRE HYDRANT IS ENCOUNTERED, CONTACT WATER DIVISION ASAP.
3. FURNISH AND INSTALL 2-4" PVC CONDUITS WITH FULL CONCRETE ENCASUREMENT FROM PB3 TO PB4 AS SHOWN. MANDREL ALL CONDUITS & INSTALL PULL ROPE IN EACH CONDUIT. FIELD VERIFY EXACT LOCATION WITH PROJECT MANAGER. REFER TO ELECTRIC STANDARDS ED1 AND ED3 FOR DETAILS AND SPECIFICATIONS ON CONDUIT INSTALLATIONS. FOR DRIVEWAY APPROACH & SIDEWALK RESTORATIONS, REFER TO CITY OF AZUSA PUBLIC WORKS STANDARD. CONSULT WITH PW'S INSPECTOR FOR ALL REQUIREMENTS FOR WORKS IN THE PUBLIC RIGHT OF WAY.



AGENCY CONTACTS

AGENCY	NAME	TITLE	EMAIL ADDRESS	OFFICE TEL
AL&W(Electric)	Abdul Qadeer	Sr. Electrical Engineer	aqadeer@azusaca.gov	626-812-5065
AL&W(Electric)	Manny Garcia	Electrical Engineer	mgarcia@azusaca.gov	626-812-5213
AL&W(Water)	Melissa Barbosa	Sr. Water System Engineer	mbarbosa@azusaca.gov	626-812-5173
AL&W(Water)	Ken Godbey	Water Distribution Supervisor	kgodbey@azusaca.gov	626-812-5086
Azusa (Public Works)	Scott Henry	Public Works Inspector	shenry@azusaca.gov	626-523-7505
Azusa (Public Works)	Richard Gardea	Public Works Superintendent	rgardea@azusaca.gov	626-812-5230
Sycamore Park Apartments	on-site Manager	on-site Manager	sycamore.heritageapts@gmail	626-969-7277

UNDERGROUND SERVICE ALERT



CALL: TOLL FREE
811

TWO WORKING DAYS BEFORE YOU DIG

AZUSA LIGHT & WATER		REVISIONS		PROJECT TITLE:	
DATE	NO.	DESCRIPTION	BY	APPD	FURNISHING AND INSTALLING UNDERGROUND SUBSTRUCTURES AT 1151 W. ARROW HWY CITY OF AZUSA
10.21.21	1	Relocated conduit trench from street to sidewalk in Public Right of Way on Arrow Hwy. Specified standard 3x5 pullboxes in lieu of intercept 3x5 pullboxes for all 3x5 pullboxes.	A.Q.	HV	
REV'D: <i>Franklin 10/20/21</i>		PREP: <i>D. [Signature]</i> 10/23/21		DWG NO ED2021-3	
APPD: <i>M. Rowland</i>		SHEET: 09/27/21		SCALE: NTS SHEET: 1 of 1	