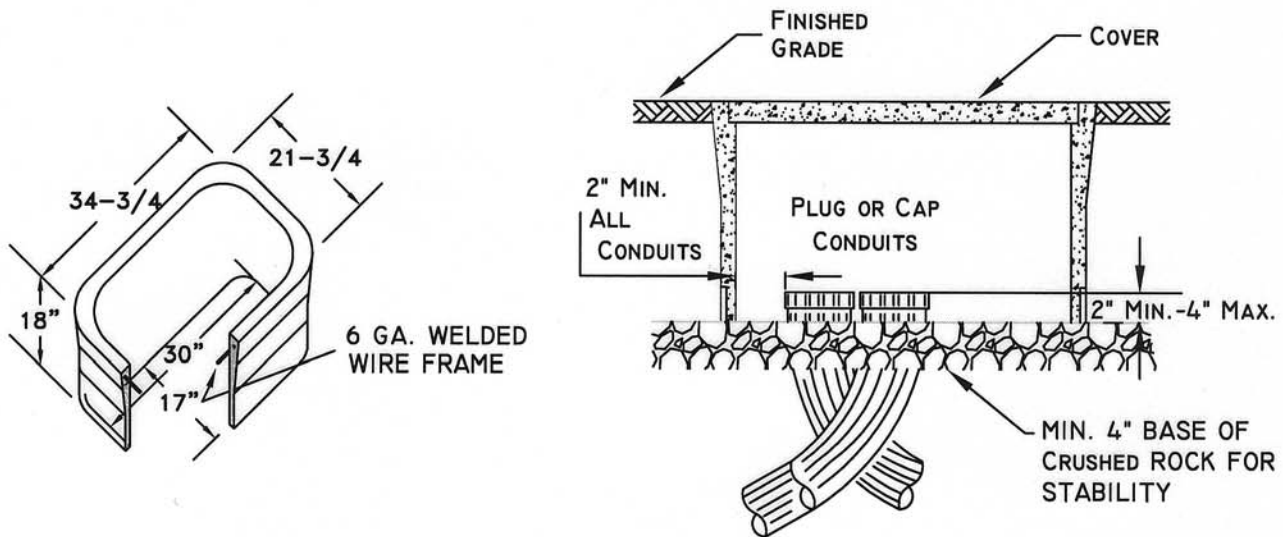


TYPICAL COVER



PULLBOX

NOTE:

1. FOR PARKWAY OR SIDE WALK INSTALLATION, PULLBOX COVER SHALL BE PEDESTRIAN RATED CONCRETE OR POLYMER CONCRETE.
2. FOR STREET OR ALLEY INSTALLATION, PULLBOX COVER SHALL BE TRAFFIC RATED GALVANIZED STEEL.



ELECTRIC STANDARD

DRAWN: HV

DATE: 4-24-03

SCALE: NTS

SECONDARY PULLBOX & COVER - 17" x 30" x 18"

APPROVED: *[Signature]*

5-8-03
DATE

DWG. NO. ED12

SHEET 1 OF 1